



# SWEMA NEWS

SWEMA Quarterly Newsletter

July—September 2016

## President's Message

The SWEMA Board of Directors put together a Strategic Plan in 2015. SWEMA has been making progress on the strategic plan initiatives during 2016, however we could certainly use more hands to move a number of initiatives forward on various Committees. We specifically need a few member volunteers to join our Marketing and Maintenance Committees immediately to assist with updating the SWEMA website and write guidelines for BMP maintenance for various BMP types. If you are interested in volunteering on these Committees or any of our SWEMA Committees, please contact me and I will connect you to the Committee Chairperson.



Will Harris, President

The Fall season is now upon us which means the WEFTEC Conference is coming soon. SWEMA will be conducting its 2<sup>nd</sup> Annual SWEMA Breakfast Forum on September 27<sup>th</sup> at the WEFTEC Conference in New Orleans starting at 7:00 am at the Conference Center. The first Breakfast Forum was held last year and it was an excellent exchange of information between members of SWEMA and representatives from WEF and EPA. This year, we will have speakers from WEF, EPA and the Interstate Technology Regulatory Council (ITRC) on hand to discuss current regulatory and BMP National Testing initiatives as well as the important role SWEMA plays in these initiatives. SWEMA has recently joined the Stormwater Team on ITRC and we welcome all members to attend the Breakfast Forum to learn more about ITRC's activities related to stormwater. Please be sure to attend this meeting at the Conference Center. Further information on the SWEMA Breakfast Forum can be found in this Newsletter. We look forward to seeing you in New Orleans on September 27<sup>th</sup>. Safe travels!



Clean Water is SWEMA's #1 Priority

## In This Issue

- President's Message
- SWEMA Forum at WEFTEC
- Committee Updates

## 2016 Meeting Schedule

*All SWEMA Meetings are held via conference call unless a city/state is listed. Please contact Laurie for conference call log-in and information.*

### SWEMA Members Forum

**Tuesday, September 27, 2016**

New Orleans, LA (in conjunction with WEFTEC—see inside for schedule)

### GARC Meeting

**Friday, September 16, 2016**

via conference call

### TCOM Meeting

**Wednesday, September 21, 2016**

via conference call

### TCOM Meeting

**Wednesday, October 19, 2016**

via conference call

### TCOM Meeting

**Wednesday, November 16, 2016**

via conference call

### GARC Meeting

**Friday, November 18, 2016**

via conference call

Please join us for the membership meetings. Contact Laurie Honnigford for agenda and meeting information at [laurie@stormwaterassociation.com](mailto:laurie@stormwaterassociation.com). Your input and contributions are vital to SWEMA.



## GARC Update

Since the beginning of the calendar year, GARC has focused on a few important issues including;

1. monitoring the status of the Stormwater Testing and Evaluation for Products and Practices (STEPP) program,
2. preparing a recommendation for EPA's Phase II MS4 General Permit Remand Rule and
3. assessment of a sizing methodology for possible submittal to the Virginia BMP Clearinghouse Committee and others.

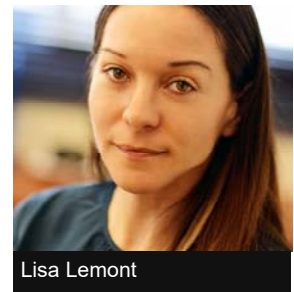
WEF and the Interstate Technology and Regulatory Council (ITRC) have agreed to work in a complimentary manner to develop and promote a national BMP verification program. SWEMA voted at the May meeting to join the ITRC and designate a SWEMA representative to the stormwater committee. GARC continues to monitor the STEPP program as WEF and ITRC responsibilities are determined by the respective groups. In short, it appears WEF will be responsible for protocol and verification, and ITRC will be responsible for technical issues like system design, installation, and O&M as well as the promotion of the program to help gain national acceptance. WEF released a white paper in July titled "Framework for a National Testing and Evaluation Program Based Upon the National Stormwater Testing and Evaluation for Products and Practices (STEPP) Initiative which outlines the structure and governance recommended for a national verification program.

In March, Lisa Lemont composed a letter to the EPA with input from Derek Berg responding to a short list of three proposals EPA was considering for modification of the Phase II MS4 General Permit. The letter expresses SWEMA support for Option 1 which would maintain a traditional general permit approach. The traditional approach is likely to result in a more consistent requirement of what constitutes the "Maximum Extent Practicable" between permitted entities within a given permitting agency's jurisdiction. The letter went on to say that SWEMA believes that the Traditional General Permit Approach provides stakeholders with the best avenue to review, comment, and request a public hearing on MEP requirements which is necessary to ensure that the definition of MEP is both clear and reasonable. This approach provides an opportunity to revisit the requirements for meeting MEP with each successive permit. Option 1 provides an important feedback mechanism between researchers, structural BMP designers, regulators, and permitted entities to ensure that BMPs are implemented in a manner that encourages innovation through the application of current research and verification through developing initiatives such as the STEPP program.

Finally, BioClean has presented GARC with an alternative sizing methodology which could be used in Virginia and nationally to help size flow-based BMPs. The methodology was developed for BioClean by GeoSyntec and is based on continuous simulation modeling. BioClean is asking SWEMA to recommend this methodology to the Virginia BMP Clearinghouse Committee. The committee has already provided a written recommendation of the Graphical Peak Discharge Method for flow-based sizing, but BioClean's approach would result in somewhat smaller systems which could make manufactured systems more competitive. The GARC is currently working to understand modeling criteria and methodology and to predict what ramifications using a model like this would have in the marketplace. Findings will eventually be reported to the SWEMA membership and then the SWEMA Board for support if warranted.



Jay Holtz



Lisa Lemont

*– Jay Holtz & Lisa Lemont*

# SWEMA's Annual Breakfast Forum

DATE: **Tuesday, September 27, 2016**

TIME: **7:00 a.m.— 8:30 a.m.** Breakfast will be served.

LOCATION: **New Orleans, LA** (in conjunction with WEFTEC)

SPEAKERS:

7:00 a.m.	<b>Will Harris, SWEMA Chairman:</b> Introductions and overview on SWEMA Primary Initiates and collaboration efforts with WEF
7:15 a.m.	<b>Chris French, Director of Stormwater Programs, WEF:</b> Update on STEPP Steering Committee Efforts and National BMP Testing Protocol Plan — Actions and Results to Date
7:45 a.m.	<b>EPA Representative:</b> Update on Stormwater Programs for EPA
8:05 a.m.	<b>Industry Guest (invited):</b>
8:20 a.m.	SWEMA membership discussion
8:30 a.m.	Adjourn

SPONSORS:



## TCOM Update

This year TCOM prioritized its six objectives from the 2015 Strategic Plan and focussed on the first two: a position paper regarding SWEMA's stance on LID and the role of MTDs and a series of technical write ups on BMPs. The position paper was sent to the board at the AGM and it was accepted with some minor edits. By the time you read this it should be on the website. TCOM is working with the Board on additional strategies for distributing the paper.

In terms of the BMP write ups, so far five out of approximately twenty have been completed. With the first few as templates it should be possible to produce the remaining ones more quickly. This remains an on-going task. Members of TCOM remain actively involved in the STEPP process, which seems to be gaining some momentum. We also participate in the NJDEP MTD workgroup which handles proposed changes to the NJCAT testing protocols. Both of these bodies meet in September so there should be more news for the next newsletter.

Greg Williams can be contacted at [GWilliams@goodharbourlabs.com](mailto:GWilliams@goodharbourlabs.com) or +1 (905) 696-7276.

— *Greg Williams*



Dr. Greg Williams ready for New Orleans

# SWEMA Board of Directors

## SWEMA's Board of Directors for 2015—2016:

President: **Will Harris**, Bio Clean Environmental Services, Inc.

Vice President: **Derek Berg**, Contech Engineered Solutions

Treasurer: **Kevin McKee**, Stormwater Compliance

*At – Large Board Members:*

**Ernie Carrasco**, Oldcastle Stormwater Solutions

**Barry Bauer**, Forterra Pipe and Precast

**John Moll**, CrystalStream Technologies

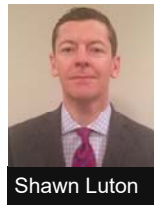
## Members on the

**Shawn Luton** is now working for Nclear, Inc. [sluton@nclear.us](mailto:sluton@nclear.us) and (404) 909-4696.

**Barry Bauer** has taken a position Forterra Pipe and Precast. Barry can be reached at [barry.bauer@forterrabp.com](mailto:barry.bauer@forterrabp.com), (678) 209-



Barry Bauer



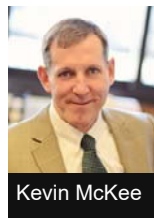
Shawn Luton

## Maintenance Committee

Kevin McKee has agreed to serve as co-chair of the Maintenance Committee.

In 2016 the Maintenance Committee has continued to focus on expanding and developing the content of the website focused on BMP maintenance.

*– Jeff Bentley & Kevin McKee*



Kevin McKee



Jeff Bentley

## Marketing Committee

WEFTEC is being held in New Orleans, LA, starting Sunday, September 24 through Wednesday September 28. SWEMA is excited to be involved with this enormous event, and hope to experience the benefit of increased exposure to the high number of attendees that are sure to pass through the exhibit hall. Marketing Committee member David Corr and Managing Director, Laurie Honnigford have helped to prepare an invitation to the SWEMA Breakfast Forum help September 27 from 7—8:30 a.m. The agenda can be found on page 3 of this newsletter.

This event was well attended in 2015, and it is expected to have strong participation again in 2016. Three sponsors from 2015 have committed to sponsor this year's event: Bio Clean Environmental Services, Inc., HD Supply Waterworks and Contech Engineered Solutions. Three new companies have decided to sponsor this year's event: Good Harbour Labs, Fresh Creek and OldCastle.

We hope to see all of our SWEMA members participate in this event and show the industry how involved we are in improving the quality of stormwater.

*– Emil Campillo*



Emil Campillo

## Contact Us

**Will Harris**, SWEMA President,  
(909) 557-8656  
[Will.Harris@biocleanenvironmental.com](mailto:Will.Harris@biocleanenvironmental.com)

**Emil Campillo**, Marketing Chair  
(813) 480-3675  
[Emil.Campillo@hdsupply.com](mailto:Emil.Campillo@hdsupply.com)

**Jay Holtz**, GARC Co-Chair  
(971) 271-0796  
[jay.holtz@oldcastle.com](mailto:jay.holtz@oldcastle.com)

**Lisa Lemont**, GARC Co-Chair  
(207) 321-3740  
[llemont@hydro-int.com](mailto:llemont@hydro-int.com)

**Greg Williams**, TCOM Chair  
(905) 696-7276  
[GWilliams@goodharbourlabs.com](mailto:GWilliams@goodharbourlabs.com)

**Jeff Bentley**, Maintenance Co-Chair  
(716) 713-8372  
[jbentley@crystalstream.com](mailto:jbentley@crystalstream.com)

**Kevin McKee**, Maintenance Co-Chair  
(207) 712-2570  
[kmckee@stormcrete.com](mailto:kmckee@stormcrete.com)

**Stormwater Equipment  
Manufacturers Association**  
8357 N. Rampart Range Rd, Unit 106  
PMB #154  
Roxborough, CO 80125 USA  
(720) 353-4977  
[laurie@stormwaterassociation.com](mailto:laurie@stormwaterassociation.com)

Visit us on the web at:  
[www.stormwaterassociation.com](http://www.stormwaterassociation.com)